

Accessibility Guide for Mrs Smith's Cottage

01522 811469

mrssmithscottage@n-kesteven.gov.uk

www.mrssmithscottage.com

Contact for accessibility enquiries:

North Kesteven District Council 01529 308102



Welcome

Our visitor attraction is in the centre of Navenby and tells the story of Hilda Smith and her life spent living in the cottage.

We are fully accessible for wheelchair users on the ground floors, please get in touch if you require any further information about specific access or need advice on planning your visit.

At a Glance

Level Access

- There is level access from the wheelchair entrance to:
 - The Visitor Centre
 - The Exhibition Area
 - Accessible toilet
 - Learning Area



Pathway around Cottage Garden to Visitor Centre

- Access to the first floor of the Cottage is by wooden ladder.



Hearing

- We do not have a hearing loop.

Visual

- The walls and the doors have colour contrast.
- Some parts of the venue have low lighting.
- Some displays have audio function.

General

- Admission to Mrs Smith's Cottage is chargeable.

Getting here

3 East Road,
Navenby,
Lincoln,
LN5 0HF

Travel by public transport

- You can get to Mrs Smith's Cottage by bus.
- The bus route is No.1, Lincoln to Grantham and the bus stop is on Church Lane. It's a one minute walk (318ft) to Mrs Smith's Cottage.

Parking

- Parking is on-street.

Arrival

Path to Visitor Centre Entrance

- From the street to the entrance, there is a cobbled pathway.
- The doorway is 70cm wide with two steps into the shop.
- To the right of the Visitor Centre the path continues around to the accessible entrance: the doorway is 70cm wide. (See picture below)



- There is a the accessible toilet.

ramped footpath to access Exhibition Area and



Ramp to side wheelchair entrance

Building Entrances

- The Shop/Entrance area has a small step up and then two steps down into the Visitor Centre.
- The Cottage entrance has a small ridge and the doorway is 72cm wide.
- The downstairs of the Cottage is fully accessible and staff will move furniture to assist access.
- The Exhibition Space has a ramped pathway and the doorway is 75cm wide

Getting around inside

Visual Impairment - General Information

- We have colour contrast between walls and doorframes.
- Some parts of the venue have low lighting.

Lift

- There is no lift in the venue

Ticket/ information desk

- Admission to Mrs Smith's Cottage is chargeable.
- The staff will welcome you on arrival but will also be moving about the building.
- There is seating available in the Exhibition Area, Cottage and gardens.
- A 360 tour of the Cottage is available in the visitor centre for people unable to access the upper floors of the Cottage.

Toilet

- There is an accessible toilet in the Exhibition Area.

Customer care support

Accessibility equipment

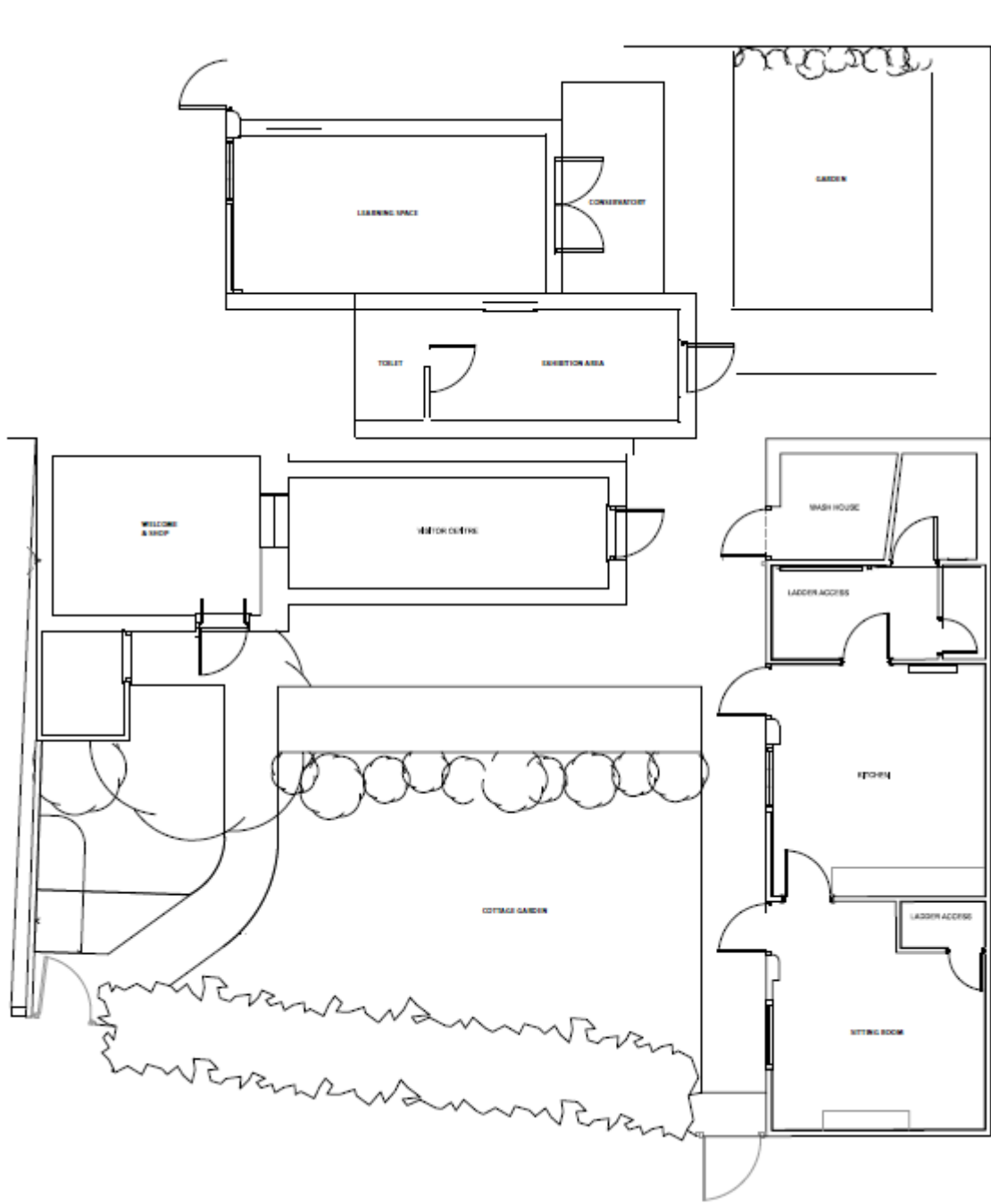
- We welcome assistance dogs, please ask staff for assistance.

Emergency evacuation procedures

- We have emergency evacuation procedures for disabled visitors.
- In the case of an evacuation, all customers inside the Attraction will be led to safety by a member of the team or by a member of the fire brigade.

Customer care support

- Please ask a member of staff for any assistance you might require.
-



Guide last updated: 20 July 2020